

# Juniper Networks **WX Central Management System (CMS) Software**

## for WX and WXC Application Acceleration Platforms



The WX™ Central Management System™ (CMS™) software from Juniper Networks offers a powerful, intuitive solution for centrally configuring, managing, and monitoring Juniper WX™ and WXC™ application acceleration platforms distributed throughout an extended enterprise.

**WX CMS Software:** The “My WAN” monitoring portal provides IT with a customized view of the health and performance of all deployed WX and WXC platforms.

The WX CMS software provides unprecedented visibility into how applications are performing over the WAN, offering detailed information about traffic patterns, bandwidth consumption, and other performance trends that IT can use to maximize WAN resources.

The monitoring software also helps IT learn how users and applications are interacting over the WAN, reporting on bandwidth consumption, top talkers, and how Quality of Service (QoS) policies are impacting overall application throughput. Armed with this insight, IT can quickly pinpoint trouble spots, determine whether the WAN is at fault, and drill down to identify and resolve problems.

The WX CMS software also provides visibility into each element of the WX Framework™, which defines the attributes required to accelerate application performance over the WAN. With the WX CMS software, IT can manage additional WAN capacity created by Molecular Sequence Reduction™ (MSR™) and Network Sequence Caching technologies, see the impact that Packet Flow Acceleration™ (PFA™) and Application Flow Acceleration™ (AppFlow™) technologies have on application performance, allocate bandwidth and prioritize applications through QoS, and direct applications over multiple WAN links with the Policy-based Multipath™ capability.

### WX CMS Software Features

The WX CMS software provides the following benefits for any deployment of multiple Juniper WX and WXC application acceleration platforms:

- **Provides multi-level visibility into WAN applications and performance:** The WX CMS software provides IT a complete view into what is happening on their WAN links. Executive Summary reports provide an at-a-glance view of key traffic, performance, and reduction results. The “My WAN™” portal allows IT staff to create customized views into the performance metrics of devices

and sites they want to focus on—including application mix, bandwidth consumption, and application performance—to enable quick problem diagnosis and troubleshooting. Drill-down reports are available by site, device, and link to view details on WAN throughput, path monitoring, top talkers, and other statistics.

- **Centralizes and simplifies platform configuration:** The WX CMS software represents a single point from which to manage as many as 2,000 Juniper WX and WXC application acceleration platforms. IT can leverage the WX CMS software to schedule key upgrade and management tasks as well as to perform updates such as rolling out new software revisions to all devices at once.
- **Provides global policies and monitoring:** The WX CMS software allows network managers to centrally manage and modify global configuration settings on all WX and WXC devices. IT can also monitor all WX and WXC platforms, with status reports providing at-a-glance summaries of device health, configuration status, and compression and acceleration statistics.
- **Automates deployment and license management:** Using the WX CMS software, IT can automate configuration of remote WX and WXC devices, greatly simplifying the set-up of tens or hundreds of distributed platforms. IT can also use the WX CMS software to automate license management, simplifying the administration of a large deployment.

### Compatibility

The WX CMS software runs on Microsoft Windows 2000 and 2003 servers and can be accessed securely from any compatible browser connection via HTTPS. The WX CMS software supports multiple versions of the WX Operating System (WXOS™) software, and IT can use the WX CMS software to manage a heterogeneous mix of WX and WXC devices.

## WX Central Management System (CMS) Software Requirements and Scalability

**Platform:** Windows Server 2000 SP3 or Windows Server 2003

**Web browser:** IE 5.5 or 6.0

**Number of simultaneous users:** 50

**Number of platforms:** 2,000

**Supported devices:** All platforms running WXOS v5.x or higher

# Devices	Pentium 4 CPU (GHz)	RAM	Disk Space (GB)
Under 100	2.0 +	768 MB	40 +
Under 100	2.0 +	768 MB	40 +
100-500	2.8 +	1.5 GB	60 +
500-1000	3.0 +	2.0 GB	80 +
1000-1500	3.2 +	3.0 GB	100 +
1500-2000	3.2 + dual CPU	4.0 GB	120 +

## Key Features

### Configuration

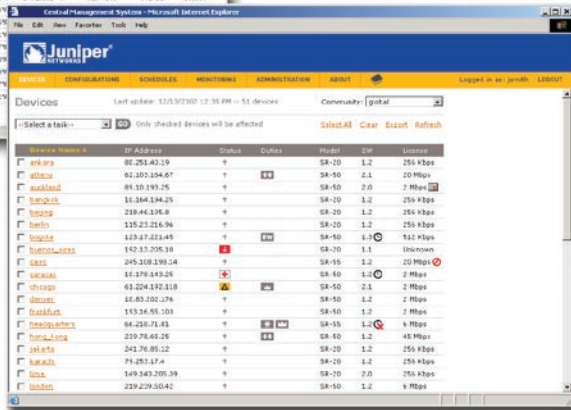
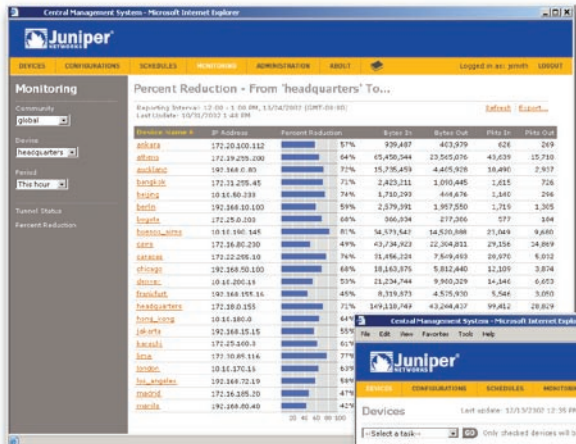
- Full centralized configuration: Dramatically simplifies large deployments
- Configuration templates: Enables quick replication to dozens or hundreds of WX and WXC platforms
- Reuse deployed configurations: Helps in rapid deployment of new WX and WXC devices
- View and compare configurations: Line-by-line comparison highlights differences
- Track configuration changes: Simplifies troubleshooting
- Automated deployment: Requires remote site to provide only power, Ethernet, and DHCP
- Device software upgrades: Easily and quickly roll out new features to full deployment
- Scheduling of tasks: On a one-time or recurring basis for tasks such as software updates, configuration changes, and configuration backups

### Monitoring

- View feature status: Per device, per application, with a global view of all reduction, acceleration, and QoS statistics
- View top talkers: By user, device, and subnet
- At-a-glance device status: Shows current status, features enabled, any errors
- Automatic data collection: Polls for statistics on traffic, reduction, QoS, and acceleration results
- Storage of monitoring data: Up to one year

### Security

- Multiple access levels: Three: administrator, read/write, read-only
- SSL to WX and WXC devices: Ensures secure device administration
- Configurable port number for remote access: Allows changing port number from "80" to any user-chosen value
- Access lists for remote access: Include and exclude lists for IP addresses that can access WX CMS software
- User/group access control: Allows granular access to individual devices or groups of devices



**WX CMS Interface:** The WX CMS software is a powerful tool that provides easy, centralized configuration, management, and monitoring of WX and WXC application acceleration platforms.



CORPORATE HEADQUARTERS  
AND SALES HEADQUARTERS  
FOR NORTH AND SOUTH AMERICA  
Juniper Networks, Inc.  
1194 North Mathilda Avenue  
Sunnyvale, CA 94089 USA  
Phone: 888-JUNIPER (888-586-4737)  
or 408-745-2000  
Fax: 408-745-2100  
www.juniper.net  
100107-001 June 2005

EAST COAST OFFICE  
Juniper Networks, Inc.  
10 Technology Park Drive  
Westford, MA 01886-3146 USA  
Phone: 978-589-5800  
Fax: 978-589-0800

ASIA PACIFIC REGIONAL  
SALES HEADQUARTERS  
Juniper Networks (Hong Kong) Ltd.  
Suite 2507-11, Asia Pacific Finance Tower  
Citibank Plaza, 3 Garden Road  
Central, Hong Kong  
Phone: 852-2332-3636  
Fax: 852-2574-7803

EUROPE, MIDDLE EAST, AFRICA  
REGIONAL SALES HEADQUARTERS  
Juniper Networks (UK) Limited  
Juniper House  
Gulford Road  
Leatherhead  
Surrey, KT22 9JH, U. K.  
Phone: 44(0)1372-385500  
Fax: 44(0)1372-385501

Copyright 2005, Juniper Networks, Inc. All rights reserved.  
Juniper Networks and the Juniper Networks logo are registered trademarks of Juniper Networks, Inc. in the United States and other countries. All other trademarks, service marks, registered trademarks, or registered service marks in this document are the property of Juniper Networks or their respective owners. All specifications are subject to change without notice. Juniper Networks assumes no responsibility for any inaccuracies in this document or for any obligation to update information in this document. Juniper Networks reserves the right to change, modify, transfer, or otherwise revise this publication without notice.